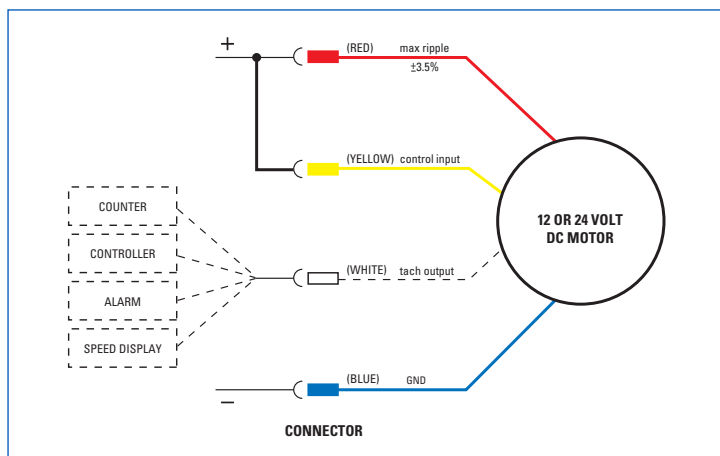


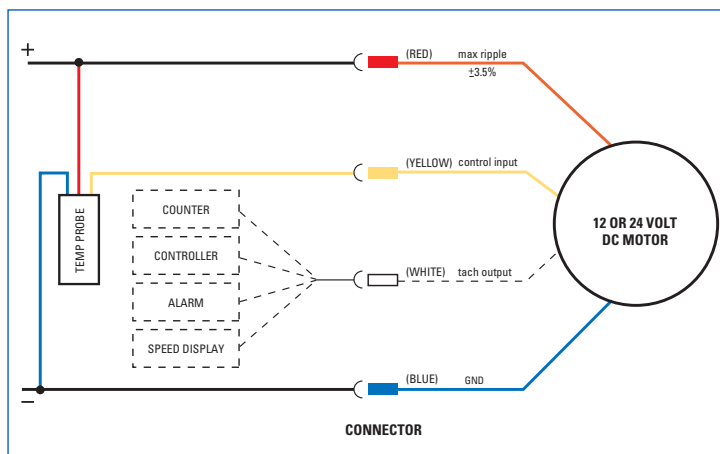
Automotive Product Wiring Diagrams

Diagram for 12V & 24V DC Fans (steel construction)*

Full Speed



Temperature controlled variable speed



Part Number

*Make sure you have the correct voltage

EF 7992 (S1G 200-AH77-52)

EF 7993 (S1G 200-AI77-43)

EF 7996 (S1G 250-AI79-50)

EF 7997 (S1G 250-AH79-50)

EF 7998 (S1G 250-AI37-48)

EF 7999 (S1G 250-AH37-48)

Wiring Instructions for Full Speed Application

- Step 1: Connect red wire & yellow wires to positive.
- Step 2: Connect blue wire to negative.

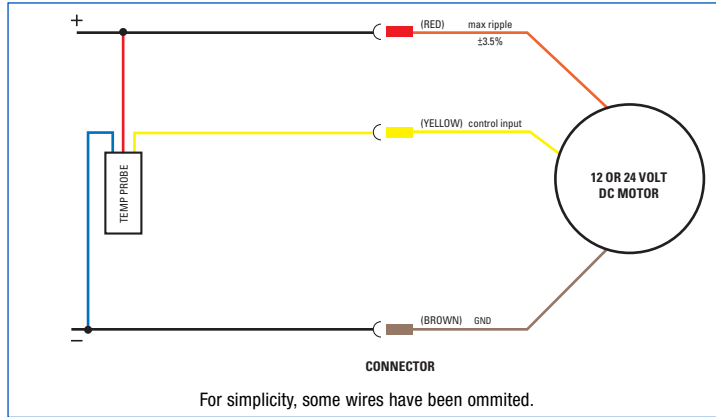
Notes

- White wire is a tacho output and is not required to be connected.
- This fan is capable of variable speed operation. Please contact your supplier for detailed wiring instructions.

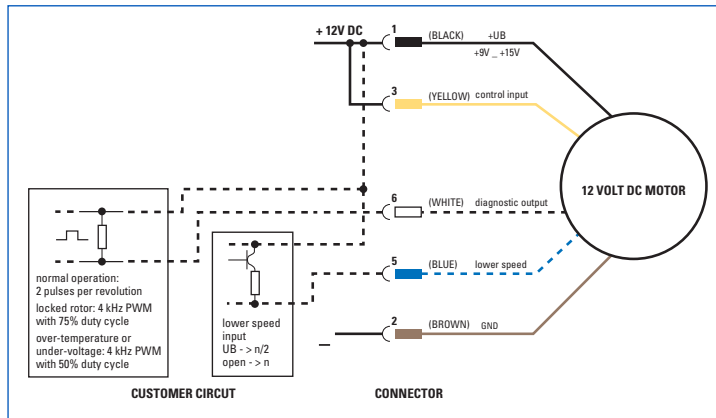
Automotive Product Wiring Diagrams

Diagram for 12V & 24V DC Fans (plastic construction)

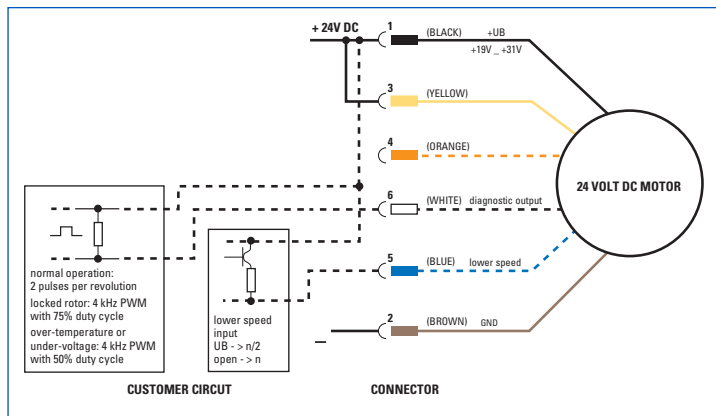
Temperature controlled variable speed



12V Diagram



24V Diagram



Part Number 12V

EF 7988 (W3G 300-EQ22-90)

Part Number 24V

EF 7989 (W3G 280-EQ26-03)

EF 7994 (W3G 300-ER26-05)

EF 7995 (W3G 300-EQ12-03)

Wiring Instructions for Full Speed Application

- Step 1: Connect black wire & yellow wire to 12V / 24V positive.
- Step 2: Connect brown wire to negative.

Notes

- This fan is capable of operating at 1/2 speed. To operate at 1/2 speed connect blue wire to 12V / 24V DC positive.
- White wire is a PWM diagnostic output only.
- This fan is capable of variable speed operation.
- Orange wire is only used for special speed controls. Do not connect for standard operation. Please contact your supplier for detailed wiring instructions.

10 Oxford Road,
Laverton North VIC 3026
Phone: (03) 9360 6400
Fax: (03) 9360 6464